

Zippy Tips

2016



The Official Girl Scout Adult Uniform

- Navy Blue Business Attire
- Girl Scout and World Trefoil pins
- Official Girl Scout scarf (women) or Girl Scout neck (men)

What are Zippy Tips?

Zippy Tip trainings are quick (10-20 minute) information segments provided at a meeting. Any interested volunteer can lead a Zippy Tip—try one out today!

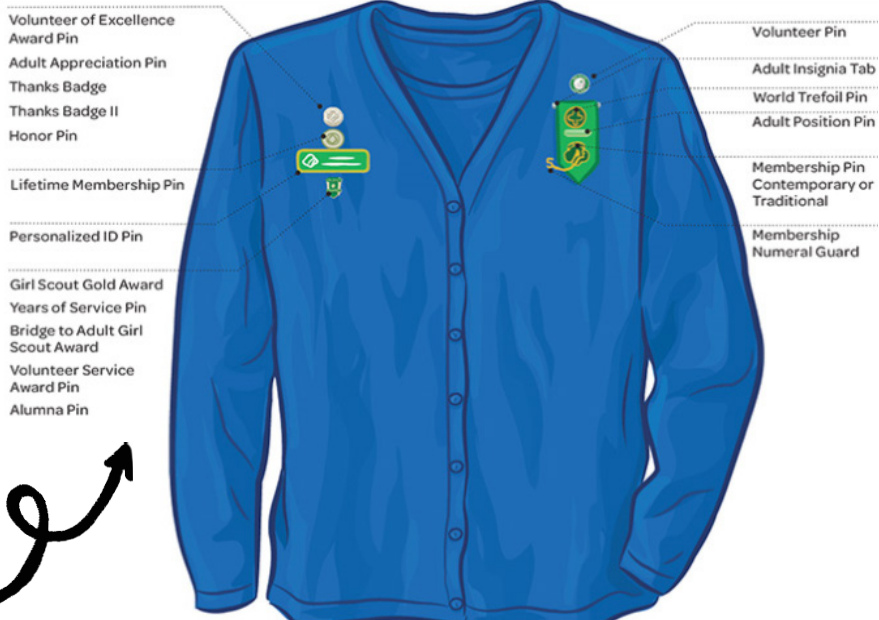
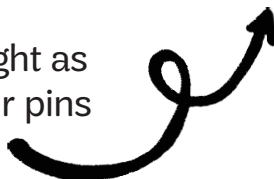
When is it required?

According to Girl Scouts of the USA, a uniform is required for ceremonies and for occasions when an adult is officially representing the Girl Scout movement.

Where do my pins go?

The green Adult Insignia Tab is worn on the left hand side, above your heart, with the World Trefoil pin, Adult Position pin and Membership pin.

Please use the image to the right as a helpful tool to guarantee your pins are in the right place!



- Volunteer of Excellence Award Pin
- Adult Appreciation Pin
- Thanks Badge
- Thanks Badge II
- Honor Pin
- Lifetime Membership Pin
- Personalized ID Pin
- Girl Scout Gold Award
- Years of Service Pin
- Bridge to Adult Girl Scout Award
- Volunteer Service Award Pin
- Alumna Pin

- Volunteer Pin
- Adult Insignia Tab
- World Trefoil Pin
- Adult Position Pin
- Membership Pin Contemporary or Traditional
- Membership Numeral Guard

For questions or more information:

Call us toll-free at (844) 476 - 4787

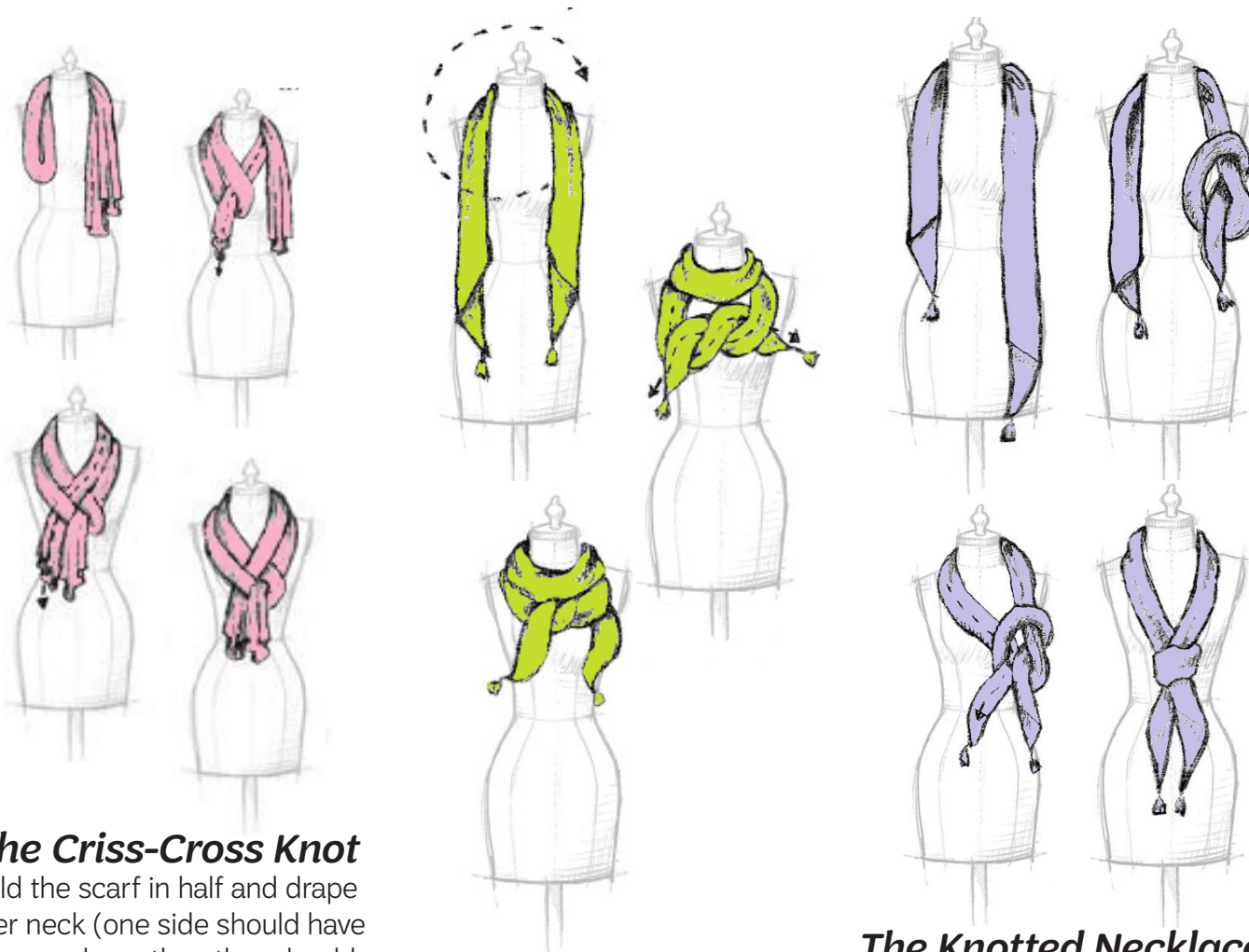
Or email us at mvp@gsmists.org



Adult Uniforms

3 Options: Tying the Official Girl Scout Women's Scarf

Tying the Official Girl Scout scarf can be tricky at first! If you're unsure how, use this page as a tool to help you tie your Girl Scout scarf. Good luck!



The Criss-Cross Knot

Fold the scarf in half and drape over neck (one side should have an open loop, the other should have the two loose ends of the scarf). Feed one loose end through the loop. Twist the loop once and feed the other loose end through. They should be sectioned from each other, with the final result resembling the images above.

The Neck Wrap

Loop the scarf once around your neck. Make a half knot up near your neck and pull the fabric of the original neck loop down to cover the half knot. See the images above for assistance.

The Knotted Necklace

Wrap the scarf behind your neck so that you have one loose end on each side. Take one end and wrap it around your hand, pulling it through to form a loose knot. Take the other end and pull it through the side knot. The final product is pictured above.

For questions or more information:

Call us toll-free at (844) 476 - 4787

Or email us at mvp@gsmists.org